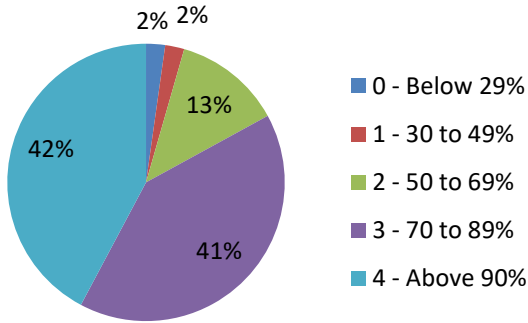
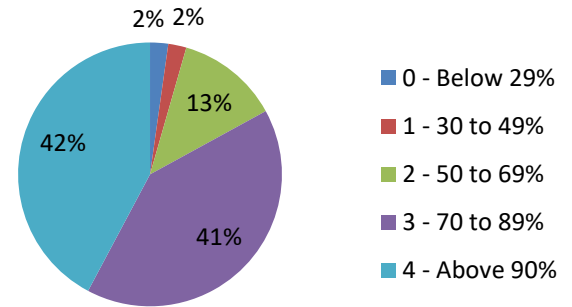


## Student Satisfaction Survey (SSS)

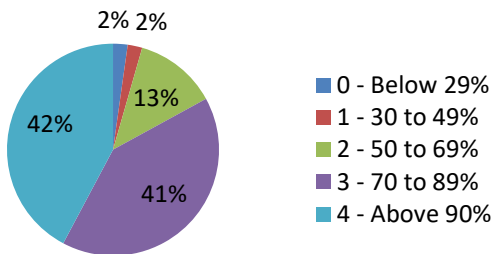
### 1. How much of the syllabus was covered in the class?



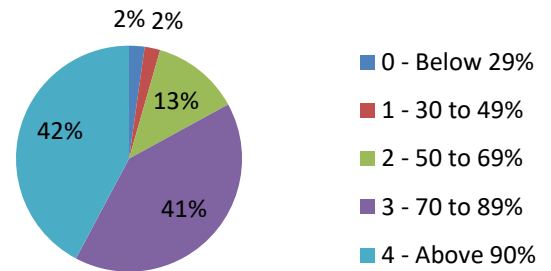
### 5. Fairness of the internal evaluation process by the teachers



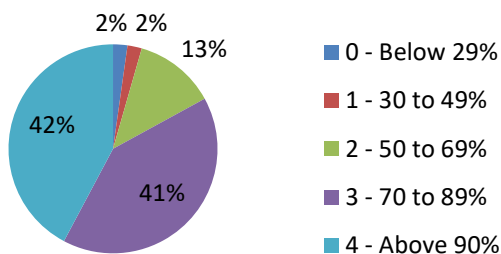
### 2. How well did the teachers prepare for the classes?



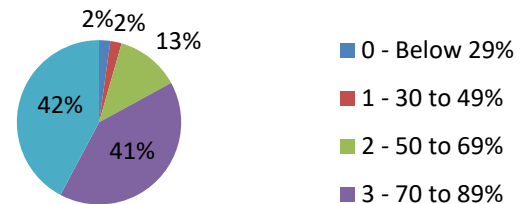
### 6. Was your performance in assignment discussed with you?



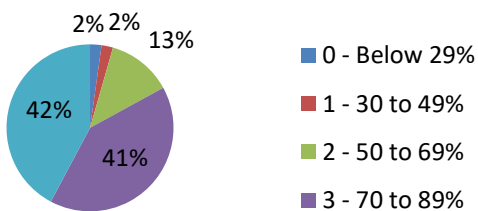
### 3. How well were the teachers able to communicate?



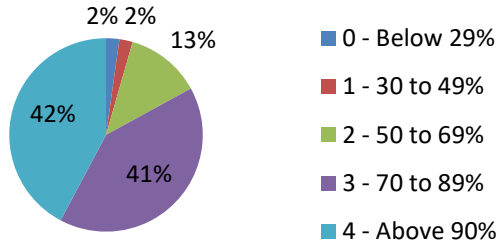
### 7. The institute takes active interest in promoting internship, student exchange, field visit opportunities for students?



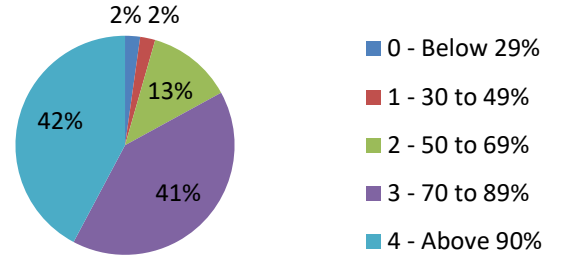
### 4. The Teacher's approach to teaching can best be described as



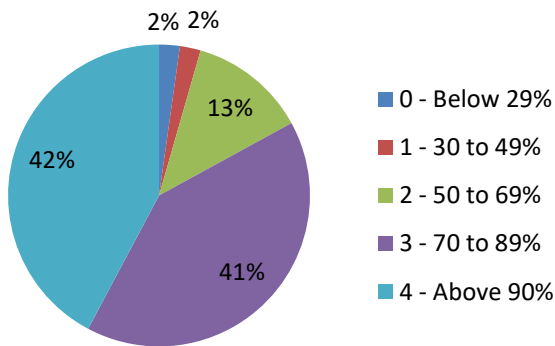
**8. The teaching and mentoring process in your institution facilitates you in cognitive, social and emotional growth?**



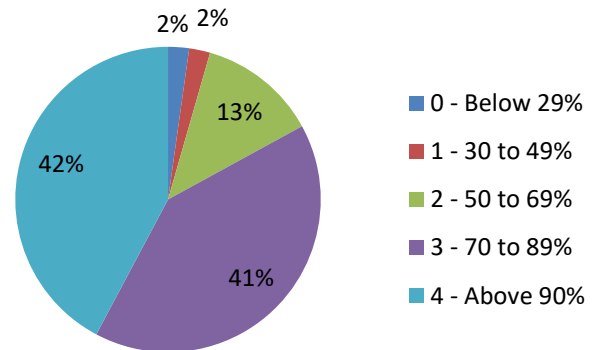
**11. Your mentor does a necessary follow-up with an assigned task to you?**



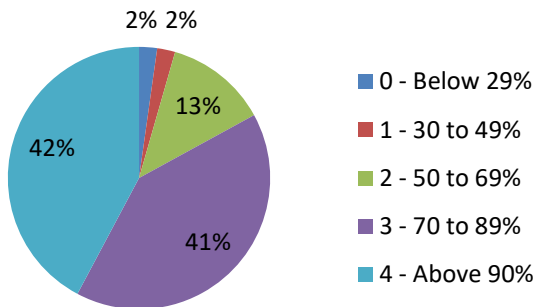
**9. The institution provides multiple opportunities to learn and grow**



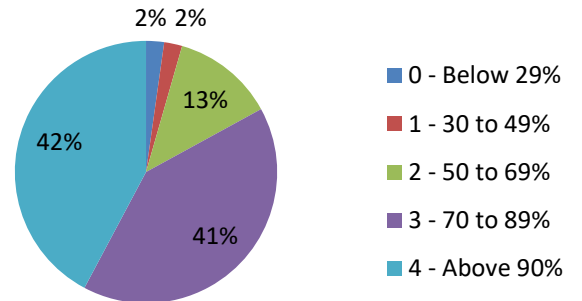
**12. The teachers illustrate the concepts through examples and applications.**



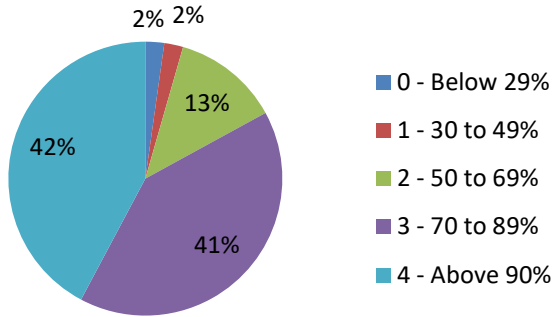
**10. Teachers inform you about your expected competencies, course, outcomes and programme outcomes?**



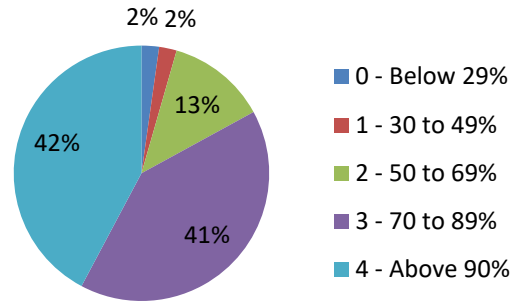
**13. The teachers identify your strengths and encourage you with providing right level of challenges.**



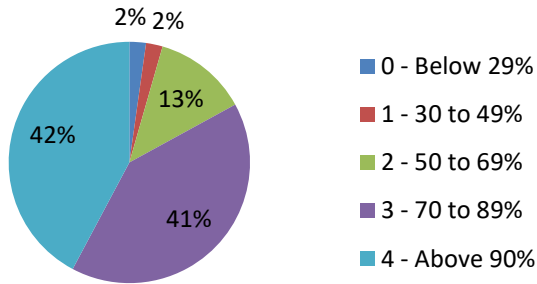
**14. Teachers are able to identify your weakness and help you to overcome them.**



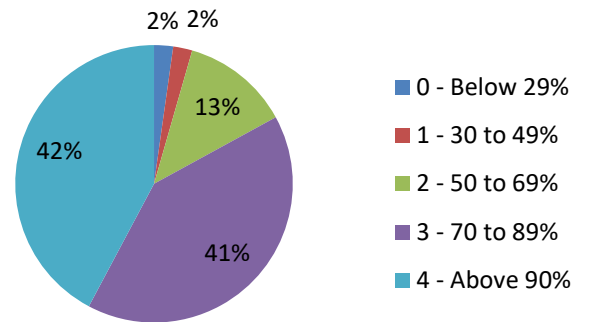
**17. Teachers encourage you to participate in extracurricular activities**



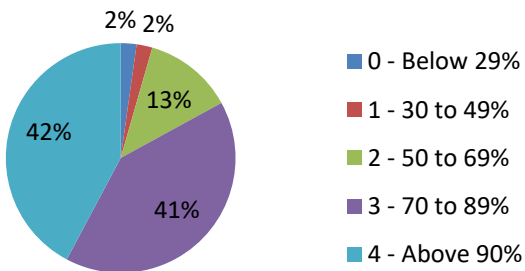
**15. The institution makes effort to engage students in the monitoring, review and continuous quality improvement of the teaching learning process.**



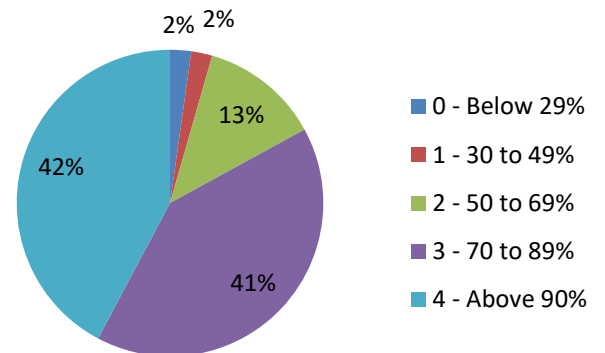
**18. Efforts are made by the institution/teachers to inculcate soft skills, life skills and employability skills to make you ready for the world of work.**



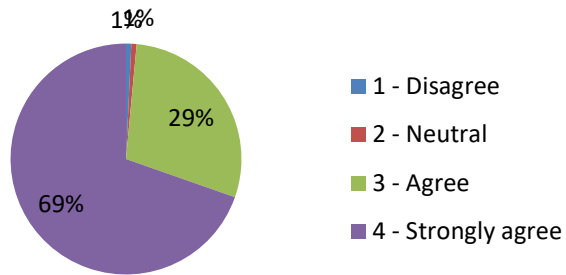
**16. The institute/teachers use student centric methods, such as experiential learning, participative learning and problem solving methodologies for enhancing learning experiences.**



**19. What percentage of teachers use ICT tools such as LCD projector, Multimedia etc. while teaching.**



**20. The overall quality of teaching-learning process in your institute is very good.**



**21. Give three observations/suggestions to improve the overall teaching-learning experience in your institution.**

1. Need of more ICT enabled classroom
2. Need of more laboratory equipment
3. Library books has to be enhanced